

## Procedure Card for IDenta Cocaine/Crack Identification

### INSTRUCTIONS

- A. Remove sampler from the top of the IDenta test unit.



- B. Press sampler's adhesive tip onto suspected substance, allowing some material to stick to tip.



- C. Return sampler to the test unit and press firmly to lock.



**Warning:** Do not continue to the next step until sampler is completely locked into place.

- D. **With thumb and forefinger**, firmly press Chamber 1 until ampoule breaks.



Gently shake test unit 2-3 seconds.



- E. If the particles adhering to the sampler tip turn a turquoise color, cocaine may be present.  
Note: color may fade in a few minutes.



Proceed to cocaine confirmation - Step 2.

**If no color develops:**

- G. **With thumb and forefinger**, firmly press Chamber 2 until ampoule breaks.



- H. Gently shake test unit for 1 second.



- I. If the particles adhering to the sampler tip turn a turquoise color, crack (cocaine base) may be present.



Proceed to crack confirmation.

Note: color may fade within a few minutes.

- J. If a turquoise color does NOT develop, cocaine or crack are NOT present.



## Cocaine/Crack Confirmation

- A. Remove sampler from the top of the IDenta test unit.



- B. Apply sampler's adhesive tip to suspected substance to be tested. **Powder should cover the surface of the tip.**



- C. Return sampler to the test unit and press firmly to lock.



**Warning:** Do not continue with D if the sampler is not completely locked into place.

### Crack confirmation

- D. **With thumb and forefinger**, firmly press Chamber 1 until ampoule breaks.



Gently shake test unit for a few seconds.

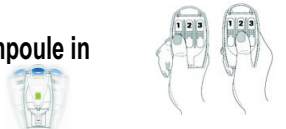


- E. If the liquid in the window turns green (light or dark), the presence of crack is confirmed.



### Cocaine confirmation

- F. **With thumb and forefinger**, break ampoule in chamber 1 and 2 and gently shake.



- G. If the lower phase of the windows turns green (light or dark), the presence of cocaine is confirmed.



- H. If red, purple, other color or no color develops in the window, no cocaine or crack are present.